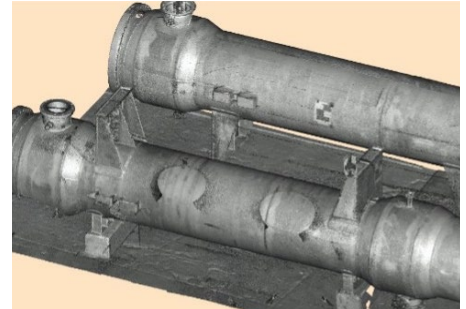


# Design Verification Services for Industrial Facilities

TEAM's Advanced Digital Imaging (ADI) uses 3D data-capture technologies to provide analysis, quality control, documentation and as-built fabrication support services to help clients reduce piping installation errors. Identifying fabrication errors at the shop minimizes on site field changes and speeds up installation times. This results in quicker turn arounds and limited unit outages.



Advanced laser scanning systems, operated by the industry's most experienced professionals, safely and efficiently capture a project's scope. The laser scans are seamlessly merged to generate a complete and precise digital vessel that is used as the basis for critical decision making and fabrication verification.

## Services

- + **Laser Scanning** – Utilizing the latest technology to accurately capture the true existing conditions.
- + **VESSEL 3D Modeling** – Utilizing parametric modeling software to produce designed vessel 3D models.
- + **Design Verification** – 3D CAD models are integrated with laser scans to confirm accuracy, clash check and ensure fit up.
- + **Fabrication Verification** – Vessel and nozzles are verified at the shop enabling non-conforming parts to be repaired before shipment.

## Solutions

TEAM provides solutions to verify vessel design against fabricated product:

- + Dimensional variations
- + Product improvement
- + Interferences
- + Fabrication errors

