

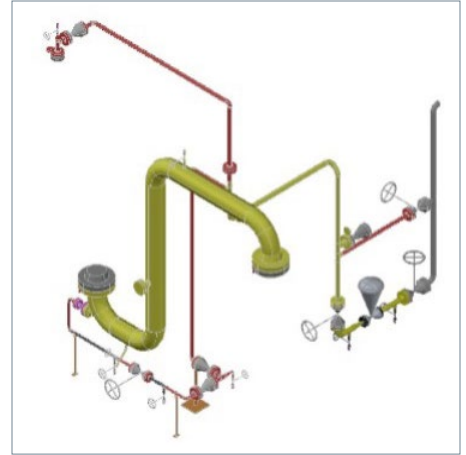
Replacement In Kind Isometrics Services for Industrial Facilities

TEAM uses advanced 3D data-capture technologies to provide analysis, quality control, documentation and reverse engineering support services to help clients replace and upgrade existing facility piping.

Advanced laser scanning systems, operated by the industry's most experienced professionals, safely and efficiently capture a project's scope. The laser scans are seamlessly merged to generate a complete and precise digital facility that is used as the basis for critical decision making and design verification.

Services

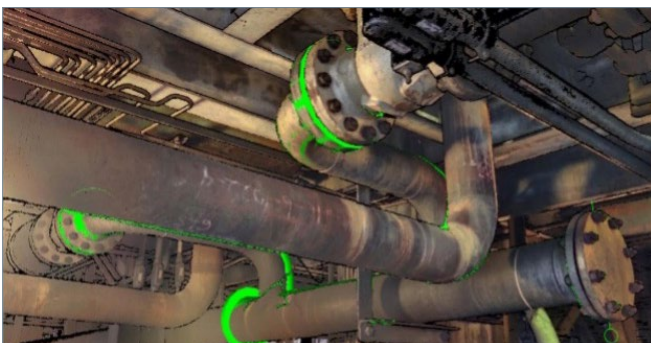
- + **Laser Scanning** – Utilizing the latest technology to accurately capture the true existing conditions.
- + **Intelligent 3D Modeling** – Utilizing advanced modeling software to produce intelligent 3D plant models.
- + **Design Verification** – 3D CAD designs are integrated with laser scans to confirm accuracy and tolerances.
- + **Fabrication Verification** – Spools and components are verified at the shop enabling non-conforming parts to be repaired before shipment.



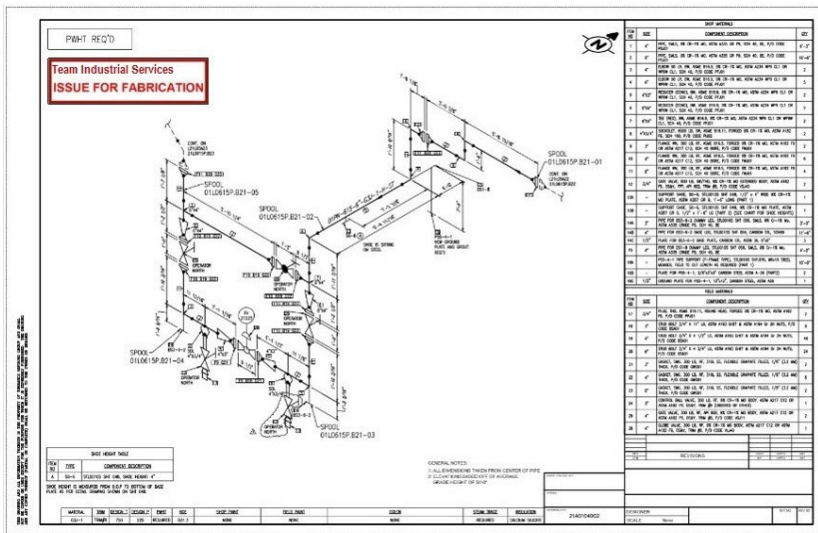
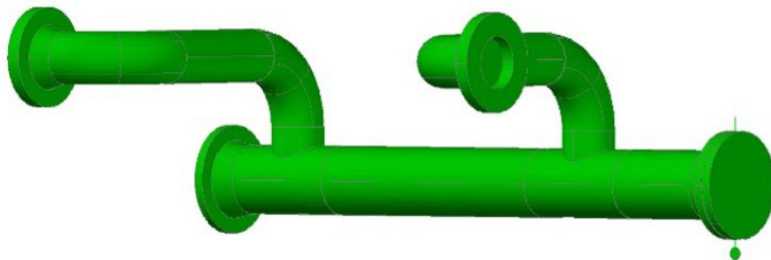
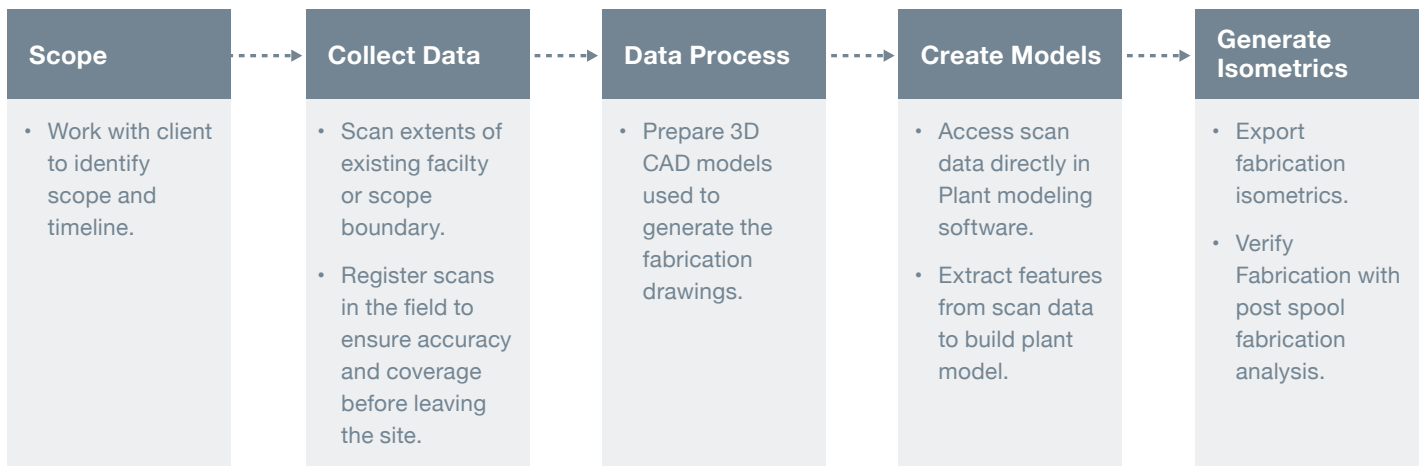
Solutions

TEAM provides solutions to document existing plant conditions for replacement in kind isometrics:

- + Scan existing facility
- + Model existing conditions
- + Provide design improvement guidance
- + Provide fabrication documents (isometrics)
- + Fabrication verification



Proven Work Process



Industry Experience

- + Industry pioneer with over 20 years of laser scanning experience
- + Over 4,000 projects across 6 continents
- + Projects from 10 to 20,000 scans
- + Experienced full time CAD designers
- + Industry trained field specialists

TEAM experts are available 24 hours a day, 7 days a week, 365 days a year.

Find your local contact at TeamInc.com.