

Reverse Engineering, Industrial Design and Manufacturing Services

TEAM uses advanced 3D data-capture technologies to provide analysis, quality control, documentation and reverse engineering support services to help clients reproduce existing parts or maintain quality during product design, manufacturing, and installation.

Advanced laser scanning systems, operated by the industry’s most experienced professionals, safely and efficiently capture a project’s scope. The laser scans are seamlessly merged to generate a complete and precise digital part that is used as the basis for critical decision making and design verification.

Services

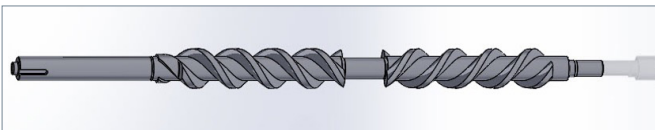
- + **Laser Scanning** – Utilizing the latest technology to accurately capture the true existing conditions.
- + **Intelligent 3D Modeling** – Utilizing advanced parametric modeling software to produce intelligent 3D models of parts.
- + **Design Verification** – 3D CAD designs are integrated with laser scans to confirm accuracy and tolerances.
- + **3D Printing Services** – Scanned parts can be 3D printed in house on Quest Integrity’s state of the art 3D printer to further verify design before machining.



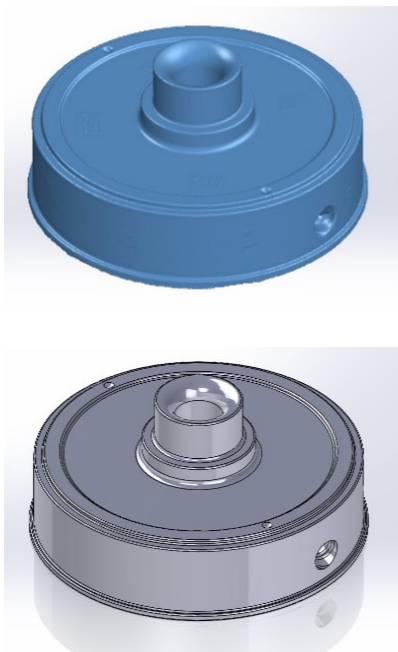
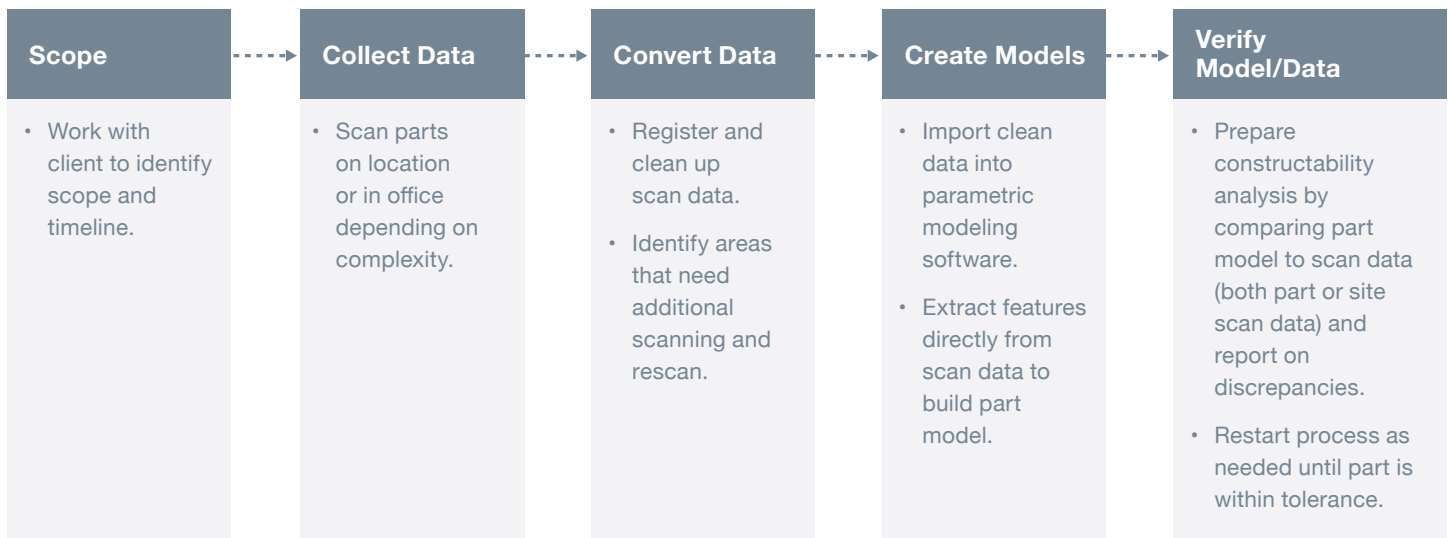
Solutions

TEAM provides solutions to recreate existing parts and verify new designs:

- + **Product reconstruction**
- + **Product improvement**
- + **Interferences**
- + **Fabrication errors**



Proven Work Process



Industry Experience

- + Industry pioneer with over 20 years of laser scanning experience
- + Over 4,000 projects across 6 continents
- + Projects from 10 to 20,000 scans
- + Experienced full time CAD designers
- + Industry trained field specialists

TEAM experts are available 24 hours a day, 7 days a week, 365 days a year.

Find your local contact at TeamInc.com.

