



# XTR Data Logger™

## Digital Temperature Data Collection

The all-new XTR Data Logger with all-new touchscreen user interface and TEAMScada View Software

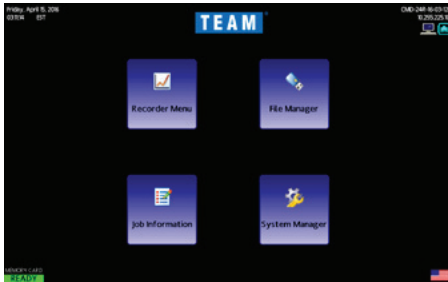
The XTR data logger is the latest advancement in digital temperature data collection. It features a 12-inch touchscreen for operation and includes twenty-four inputs for logging temperature data as well as networking capabilities. It is powered by standard 120-volt power and includes our TEAMScada View software for viewing and printing trend charts.

### Features and Benefits

- 12-inch touchscreen user interface
- Twenty-four Type K thermocouple inputs
- Can be controlled from local touchscreen or remotely via a password protected web page on a networked computer
- Color-coded indicators across all user screens to facilitate identifications and meaning
- Calibration certificate expiration warning and lockout to prevent use of equipment with expired documentation
- Capable of being operated in English or Spanish
- The free TEAMScada View software allows users to view log files that are downloaded to a USB flash drive or networked computer (using the TEAMScada Downloader) to create trend charts and either print or save in a PDF format
- Intuitive interface reduces training time and operator error

# XTR Data Logger™

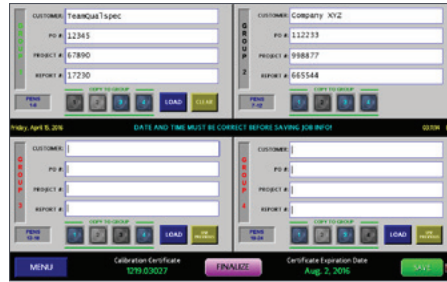
## Digital Temperature Data Collection



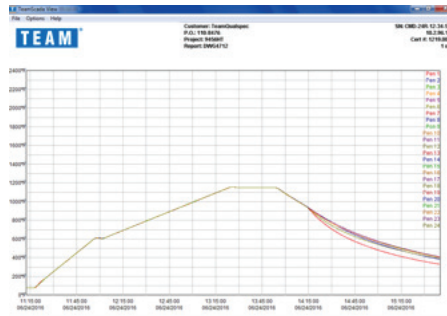
**Main Menu:** Menus are simple to navigate by using the buttons on the touchscreen menus. The LED-backlit display makes it easy to view all information regardless of the environment in which it is operated.



**Recorder Menu:** There are several options for viewing temperature data that can be set per the user's preference and needs. The system can scroll through trend screens at a set pace or view temperature values for all zones at a glance.



**Job Information:** Job information is entered per group of six inputs to facilitate data entry and traceability. Information can be entered manually, recalled from the previous job, loaded from a text file or copied directly from one group to another which reduces time and entry errors.



**Trend Chart:** Printed charts can be configured with multiple options including orientation, time interval and which pens to display. The hard-coded job information in the header ensures data integrity for traceability of performed jobs.

### Additional Features and Benefits

- Ability to operate the machine locally or remotely allows greater flexibility of operation
- A password-protected remote log-in ensures access to the system only by authorized users
- Multiple screen views available for viewing temperature data based on the user's preference
- Log files create historical data of charts that can be saved which has never been possible with strip chart recorders
- Allows temperature data from analog equipment to be saved and used in a digital format
- Ability to save charts in PDF format allows them to be easily shared via email or USB flash drive

